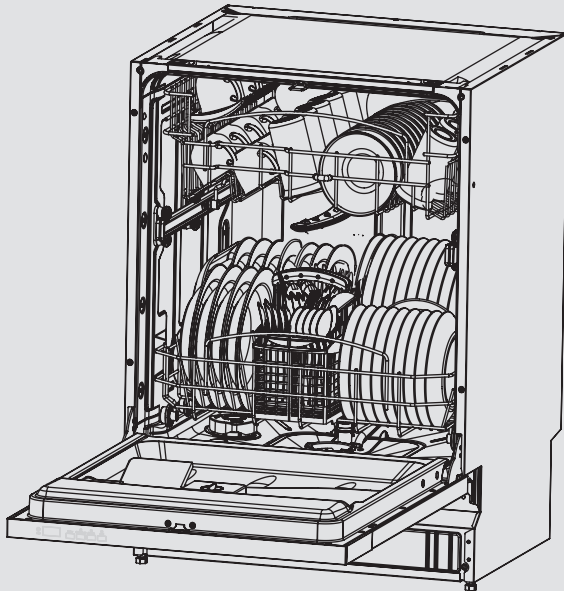




User's manual

for your dishwasher

Modell: **GS63VI**



Hints and symbols



Dispose of the dishwasher packaging material correctly.

All packaging materials can be recycled.

Plastic parts are marked with the standard international abbreviations: (e.g. PS for polystyrene, padding material)

This appliance is identified according to the European guideline 2002/96/EC on waste electrical and electronic equipment -WEEE. The guideline specifies the framework for an EU-wide valid return and re-use of old appliances.



This icon indicates a hazardous situation.

You'll find it especially with all descriptions of the steps that might cause danger.

Observe these safety instructions and behave accordingly careful.

Enter these warnings also to other users of the device.



This icon indicates a warning.

You can find it in the description of the steps that must be observed in order to damage to the unit can be prevented. Please include these safety instructions to all device users.



This icon indicates an information.

This symbol indicates useful tips and calls attention to proper procedure and behavior. The observance of the notes marked with this icon may save you many problems.



Safety Information

When using your dishwasher, follow the basic precautions including the following:

Hydrogen gas is explosive

Under certain conditions, Hydrogen gas may be produced in a hot-water system that has not been used for two weeks or more. Hydrogen gas is explosive. If the hot-water system has not been used for such a period, turn on all hot-water faucets and let the water flow for several minutes before using the dishwasher. This will release any accumulated hydrogen gas. As the gas is flammable, do not smoke or use an open flame during this time.

Warning! Proper use:

- Do not abuse, sit on, or stand on the door or dish basket of the dishwasher.
- Do not touch the heating element during or immediately after use.
- Do not operate your dishwasher unless all enclosure panels are properly in place. Open the door very carefully if the dishwasher is operating. There is a risk of water squirting out.
- Do not place any heavy objects or stand on the door when it is open. The appliance could tip forward.
- When loading items to be washed: Locate sharp items so that they are not likely to damage the door seal; load sharp knives with the handles up to reduce the risk of cut-type injuries;
- Warning: Knives and other utensils with sharp points must be loaded in the basket with their points down or placed in a horizontal position.
- When using your dishwasher, you should prevent plastic items from contacting with heating element.
- Check that the detergent receptacle is empty after completion of the wash cycle.
- Do not wash plastic items unless they are marked dishwasher safe or the equivalent. If plastic items are not marked, check the manufacturer's recommendations.
- Use only detergent and rinse additives designed for an automatic dishwasher. Never use soap, laundry detergent, or hand washing detergent in your dishwasher.
- Other means for disconnection from the supply must be incorporated in the fixed wiring with at least 3mm contact separation in all poles.
- Keep children away from detergent and rinse aid, and away from the open door of the dishwasher, there could still be some detergent left inside.
- Young children should be supervised to ensure that they do not play with the appliance.
- This product is not designed for use by persons (including children) who have reduced physical, sensory or mental capacities or persons with no experience or knowledge, unless they are instructed and supervised in the use of the appliance by a person responsible for their safety.
- Dishwasher detergents are strongly alkaline. They can be extremely dangerous if swallowed.
- Avoid contact with skin and eyes, and keep children away from the dishwasher when the door is open.
- The door should not be left in the open position since this could present a tripping hazard.
- If the supply cord is damaged, it must be replaced by the manufacturer or a similarly qualified person in order to avoid a hazard.

- During installation, the power supply must not be excessively or dangerously bent or flattened.
- Do not tamper with controls.
- The appliance is to be connected to the water mains using new hose sets, and the old hose-sets should not be re-used.
- Make sure that the carpet must not obstruct the openings at the bottom base.
- Use the dishwasher only for its intended function.
- The dishwasher is intended for indoor use only.
- The dishwasher is not designed for commercial use. It is intended for use in domestic households and in similar working and residential environments.

Packaging material could be dangerous for children!

For disposing of package and the appliance please go to a recycling centre. Cut off the power supply cable and make the door closing device unusable. Cardboard packaging is manufactured from recycled paper and should be disposed in the waste paper collection for recycling.

By ensuring this product is disposed of correctly, you will help prevent potential negative consequences for the environment and human health, which could otherwise be caused by inappropriate waste handling of this product.

For more detailed information about recycling of this product, please contact your local city office and your household waste disposal service.

Congratulations on the purchase of your new dishwasher!

We recommend that you spend some time to read this Instruction / Installation Manual in order to fully understand how to install correctly and operate it.

For installation, please read the installation section.

Read all the safety instructions carefully before use and keep this Instruction / Installation Manual for future reference.

Table of content

| | |
|---|----|
| 1. Specifications | 7 |
| 1.1 Product specifications | |
| 1.2 Information about energy efficiency | |
| 2. Device description | 8 |
| 2.1 Control panel | |
| 3. Using your dishwasher | 10 |
| 3.1 Before the first use | |
| 3.2 Loading salt into the softener | |
| 3.3 Set up the water softener | |
| 3.4 Fill the rinse aid dispenser | |
| 3.5 Adjusting the rinse aid dispenser | |
| 3.6 Loading the upper basket | |
| 3.7 Adjusting the upper basket | |
| 3.8 Loading the lower basket | |
| 3.9 Folding racks | |
| 3.10 Cutlery basket and fork shelf | |
| 4. Starting a washing program | 19 |
| 4.1 Wash cycle table | |
| 4.2 Changing the program | |
| 4.3 At the end of the cycle | |
| 4.4 Forget to add dish | |
| 4.5 Setting up the delayed start | |
| 4.6 Refill signal lamps | |
| 4.7 3-in-1-Function | |
| 4.8 Key lock | |
| 5. Energy saving | 23 |
| 6. Maintenance and clearing | 24 |
| 6.1 Filter cleaning | |
| 6.2 Maintenance and cleaning | |
| 6.3 Cleaning tips | |
| 7. Troubleshooting | 27 |
| 7.1 General troubleshooting | 27 |
| 8. Information sheet | 31 |

My device

For future reference please record the following information, which can be found on the nameplate. Also, please note the date of purchase of your device that is on your invoice. The rating plate of your dishwasher is located on the right inside of the hinged door.

Model number:

Serial number:

Date of purchase:

General Information

1. Specification

Dimensions:

Height: 820 - 870 mm

Width: 596 mm

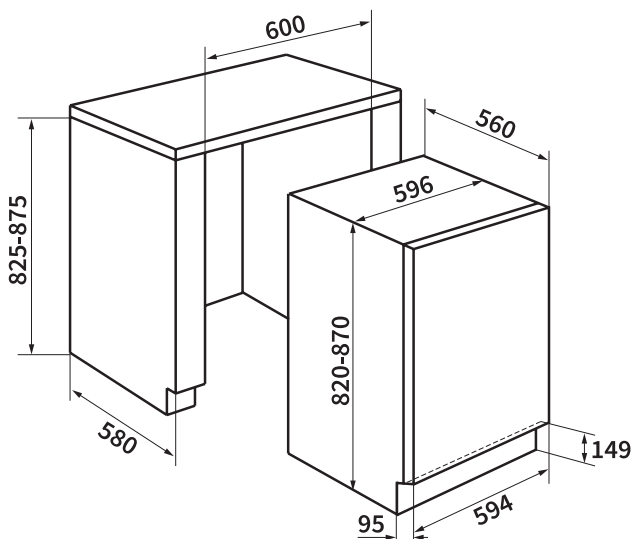
Depth: 575 mm

Packaging dimensions:

Height: 825 mm (min.)

Width: 600 mm

Depth: 595 mm



1.1 Product specifications

- **12 Place settings**
- **6 programs:**
 - ECO
 - Intensive
 - Light
 - Rapid
 - Crystal
- 4 Temperatures: 40°C, 45°C, 46°C, 60°C
- Delayed start
- LED-Display
- **3 in 1-Function**
 - Self-cleaning stainless microfilter
 - **Aqua-Stop**
 - Waterproof-System
 - Concealed radiator
 - Height-adjustable upper basket
 - Tiltable plate holder
 - Adjustable feet
 - **Water consumption: 13 Liter**

1.2 Energy efficiency

Energy efficiency class: A+++

Cleaning performance class: A

Drying performance class: A

Energy consumption

Off-Mode: 0,35 W

Stand-By-Mode: 0,90 W

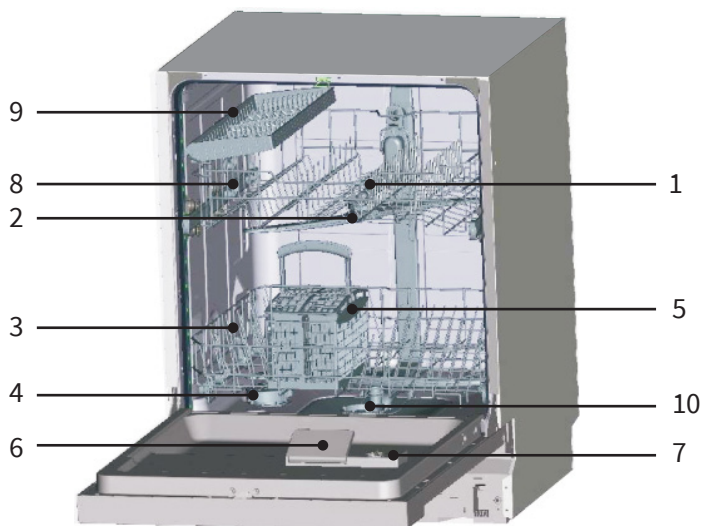
Electrical Information

Rated voltage: 220-240 V 50 Hz

Maximum connection value: 0,9 kW

Fuses: 16 A

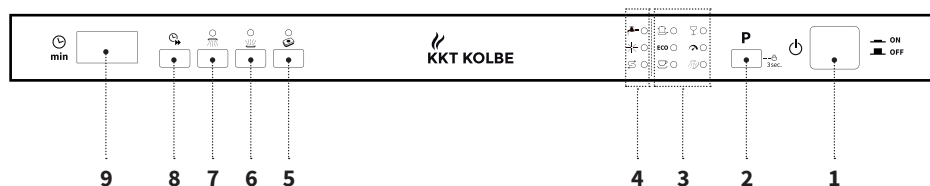
2. Device description



- 1. Upper Basket
- 2. Spray Arms
- 3. Lower Basket
- 4. Water Softener
- 5. Filters
- 6. Detergent Dispenser
- 7. Rinse Aid Dispenser
- 8. Cutlery Basket
- 9. Fork Shelf

Control panel

2.1 Control panel



1 ON-/OFF-button

2 Program selector button

After 3 seconds: Child lock gets activated.

3 LED-indicators for choosen program: Shows which program is selected.

4 LED-indicators for status: Shows when there are problems with: water, rinse aid, salt

5 3-in-1 function

6 Wash just the lower layer

7 Wash just the upper layer

8 Button for delayed start

9 LCD-Display (shows time, errors, etc.)

3. Using the dishwasher

3.1 Before first use

- A. Set the water softener
- B. Pour 500ml of water inside the salt container and then fill with dishwasher salt
- C. Fill the rinse aid dispenser
- D. Fill in detergent

3.2 Loading the salt into the softener



Important

Always use refined salt, which is intended for the dishwasher. If you take a different kind of salt (in particular table salt), the water softener is damaged.

- Remove the lower basket and then unscrew and remove the cap from the salt container.
- If you are filling the container for the first time, fill 2/3 of its volume with water (around 500ml).
- Place the end of the funnel (supplied) into the hole and introduce about 2kg of salt. It is normal for a small amount of water to come out of the salt container.
- *Carefully screw the cap back on.*
- Usually, the salt warning light will be off in 2-6 hours after the salt container is filled with salt.



Using the dishwasher



Important Information

With the next refilling of salt, it is not necessary to fill it with 500 ml of water again.

3.3 Set up the water softener

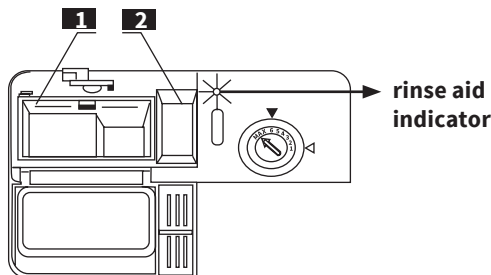
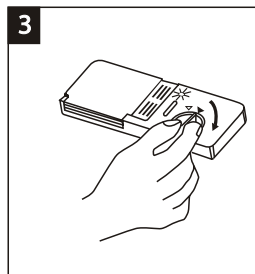
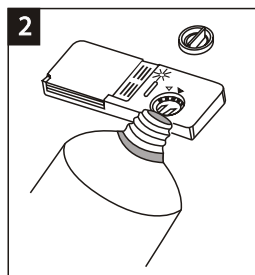
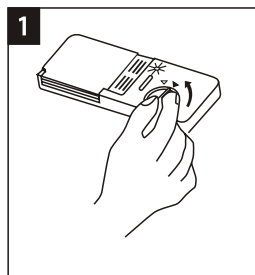
This appliance has an automatic controller for the salt dispenser built-in. In this case it is not necessary to set up the water softener manually.

3.4 Fill the rinse aid dispenser



Rinse aid is automatically added during the last rinse, ensuring thorough rinsing, spot and streak free drying.

- This appliance has been designed for the use of liquid rinse aids.
- The dosage of the rinse aid is on the inside of the tiltable door, next to the Chamber of the dosage of dishwasher tablets.
- To make the rinse aid reservoir accessible, turn the cap counterclockwise, the cap is thus loosened from the filling opening (1). Pour slowly the liquid rinse aid (2); the capacity of the reservoir is about 110 ml
- You should pour in the rinse aid slowly until the level indicator is completely black.
- You should not overfill the reservoir, it could cause the selected wash program for excessive foaming. Wipe off the remains of the rinse aid with a damp cloth.
- Unscrew the cap clockwise back again until it locks into position (3).
- If the control indicator „Rinse aid“ on the control panel is on, it is necessary to fill the detergent reservoir again.
- **Important:** Even if you use detergent tablets 3 in 1, it is necessary to constantly refill rinse aid into the reservoir.

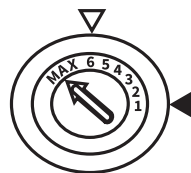


- full
- ◐ 3/4 full
- ◑ 1/2 full
- ◒ 1/4 full - should be refilled
- empty

Using the dishwasher

3.5 Adjusting the rinse aid dispenser

The amount of rinse aid that consumes the dishwasher, also depends on the water hardness. With the setting of the rinse aid dosage you should experiment until you find the optimum setting that ensures the best results.

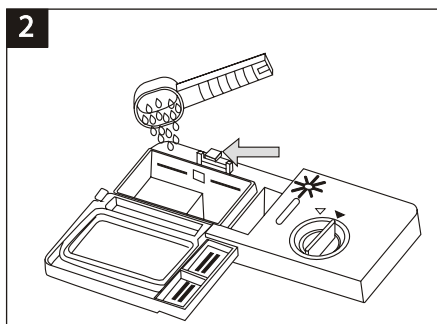
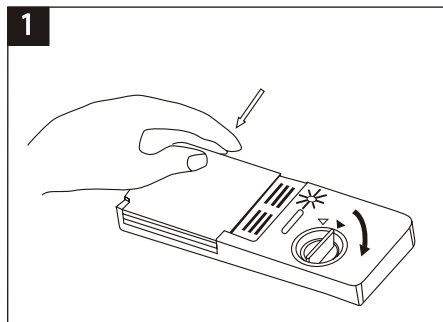


- We recommend that the first flushing adjust the rinse aid dispenser at number 4.
- If there are water spots on the dishes or the dish is not dry enough, move the arrow counter-clockwise and set it to the next higher number.
- Set the rinse aid dosage to no water stains will last as long a upward.
- If there are streaks and stripes on the dishes, the setting of the rinse aid dosage could be too high. This causes foam during the flush. Move the arrow clockwise to the next lower number.

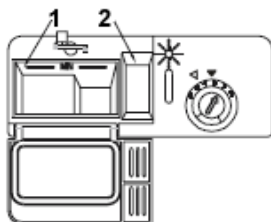
Dosage of dishwasher tablets

The dosing of the detergent must each time the flushing are filled (except for the flush mode).

- Open the lid of the detergent container **(1)** and fill in the detergent **(2)**.



Using the dishwasher



- The chamber on the picture **(1)** is intended for detergent of the main washing program. In the detergent dispenser only one tablet of detergent is inserted. If you use powder detergent or liquid detergent, follow the recommendations of the detergent manufacturer.
- The chamber on the figure **(2)** contains an extra detergent, namely for each flushing, which has a pre-rinse function; but this is only an optional extra function. This is only for powder detergent or liquid detergent, not for tablets.
- Close the lid of the detergent container and secure the clip on the edge outside.
- The clip opens after the rinsing operation is started and the tablet / powder / liquid are dosed into the dishwasher.

Intensive detergent

- The use of the program for normal rinsing in conjunction with reducing a intensive dishwashing liquid contamination and is suitable for your dishwasher. This dishwashing corresponds to the specific enzymes that dissolve the dirt particles and are included in the concentrated dishwashing detergents.
- For this reason, when selecting the normal wash cycle using dishwasher detergent the same result as „Intensive“ can be achieved.

Detergent tablets

- The detergent tablets of different brands dissolve at different rates. For this reason some detergent tablets do not dissolve during the short wash cycles and can thus develop a sufficiently effective cleaning power.
- Therefore always choose a longer program, if you use the detergent tablets, to remove all residues during the flushing process.

Using the dishwasher

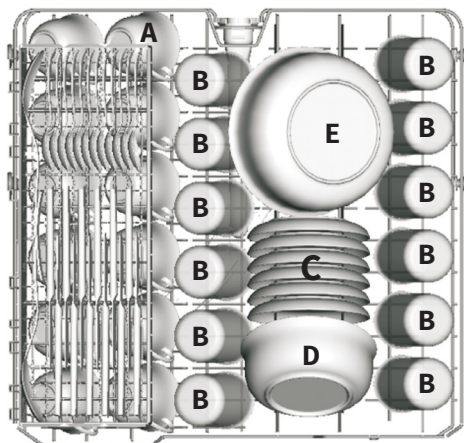
3.6 Loading the upper basket

The upper basket is designed for gentle rinse of the sensitive, fragile and smaller dishes pieces, e.g. of glasses, cups, small plates, bowls and shallow pans (if they are not heavily soiled) provided.

- A** Cups
- B** Glasses
- C** Saucer
- D** Serving bowl
- E** Serving bowl

- The dishes are to be distributed such that it does not move during the wash under the pressure of the water flow.
- Use the picture as a guide to the distribution of the dishes in the dishwasher.

* The procedure for loading the cutlery tray on the upper rack, refer to the corresponding page.

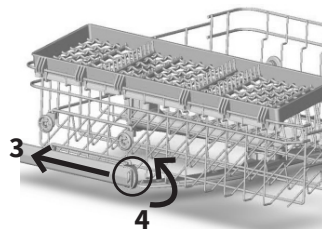
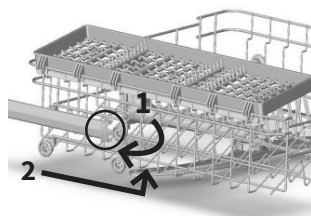


3.7 Setting the upper rack position

The height of the upper basket can be achieved by situating the wheels be set in the other plane of the guide rails.

Long objects should be placed in the cutlery tray to prevent collisions with the spray arms.

When removing the basket from the guides The basket must be empty. For easier positioning of pots and Pans, the position of the upper tray has to be changed.



Using the dishwasher

3.8 Loading the lower basket

The lower basket is designed for large and more dirty dishes, such as pans, pan lids or serving dishes suitable. In the lower basket, you can also insert mugs and various plates.

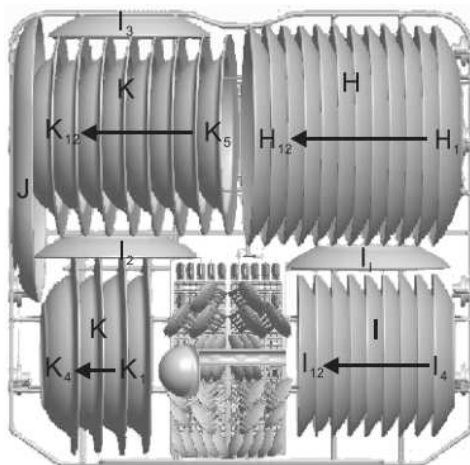
H Plates

I Dessert Plates

J Oval plates

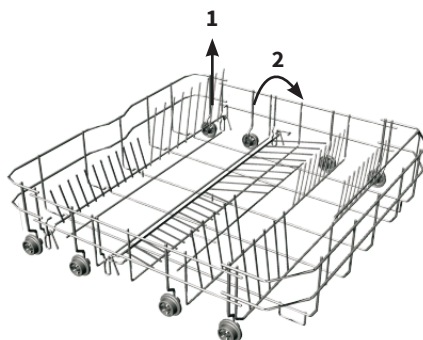
K Soup plates

- Deep dishes should be placed in a tilted position, so that the water can flow from the dish.



3.9 Foldable stand the lower rack

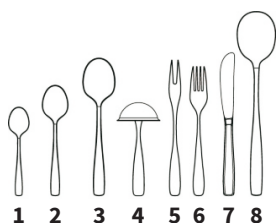
- The lower bracket has at the back of the basket folding holder that can be folded down, making it easier to load large kitchen pans and serving dishes.



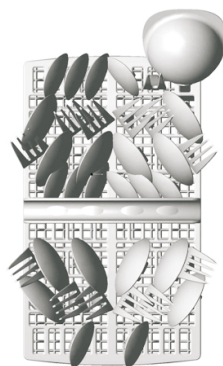
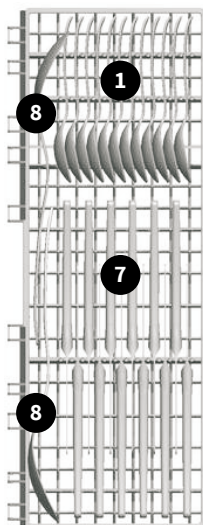
Using the dishwasher

3.10 Loading the cutlery baskets

In the lower basket, the cutlery should be placed with handles at the bottom. For optimum efficiency, use the cutlery basket put the cutlery individually into the appropriate slots. Especially long utensils should be at the front of the upper basket (pictured right), placed in a horizontal position.



1. Teaspoon
2. Dessert spoons
3. Soup spoons
4. Ladle
5. Skewers
6. Fork
7. Knives
8. Salad / Serving



- The kits are lodged in the cutlery basket on the top holes for achieving the best cleaning results.



Important

Avoid the cutlery falls through the cutlery basket, as it could cause damage to the spray arm and dishes. If the bottom of the cutlery basket begins to deform (and cutlery may fall out), replace the cutlery basket.

Using the dishwasher



Don't try to wash rags, sponges or other items that suck the water rinse.

- Before loading the dishes into the dishwasher, remove food debris and soak the burnt food residues on the pans with water.
- After loading the machine, check that the spray arms can rotate freely. If the spray arm in the rotation come into contact with the dishes, change the distribution of picked dishes.
- The cups, glasses, pans, etc., are always insert with the bottoms up so that the water can not collect in them.
- Cutlery and crockery may not cover each other; this could lead to insufficient rinsing.
- Avoid contact with each other of glasses in the dishwasher, it could cause damage to them.
- Small objects can be placed in the cutlery basket.



The following items are not suitable for washing:

- Cutlery with mother of pearl, wood, horn or porcelain handle.
- Plastic items that are not heat resistant.
- Cutlery with glued parts that are not temperature resistant.
- Cutlery or glued earthenware
- Copper or pewter
- Lead crystal glass
- Wooden bowls
- Articles made from synthetic fibers



The following items are suitable for washing only partially.

- Earthenware dishes can be washed in the dishwasher only if the manufacturer declares the dish dishwasher-proof.
- Plastic objects (e.g. food storage containers) may be washed in the dishwasher only if the manufacturer declares it to be suitable.
- Glazed Earthenware may fade after many washings in the dishwasher.
- Silver and aluminum objects can change the color in the dishwasher.

Washing programs

4. Overview

| Program | Program information | Cycle description | Dishwasher cleaner for pre- and main wash | Running time (min) | Energy consumption (KWh) | Water consumption (l) |
|--|--|---|---|-----------------------|--------------------------|-----------------------|
|  Intensive | For the heaviest soiled loads, such as pots, pans, casserole dishes and dishes that have been sitting with dried food on them for a while. | → Pre-wash → Main wash(60°C) → Rinse 1 → Rinse2 → Hot rinse → Drying | 5/25 g (or 3 in 1) | 194 minutes | 1,30 | 15 |
|  ECO (*E 50242 standard program) | For normally soiled loads, such as pots, plates, glasses and lightly soiled pans. standard daily cycle. | → Pre-wash → Main wash (46 °C) → Hot rinse → Drying | 5/25 g (or 3 in 1) | 180 minutes | 0,92 | 11 |
|  Light | Light wash cycle to be used for more delicate items which are sensitive to high temperatures. (Run cycle immediately after use) | → Pre-wash → Main wash (45° C) → Hot rinse → Drying | 5/20 g (or 3 in 1) | 176 minutes | 0,85 | 11.5 |
|  Crystal | For lightly soiled loads, such as plates, glasses, bowls and lightly soiled pans. | → Main wash (46 °C) → Rinse → Hot rinse → Drying | 5/20 g | 135 minutes | 0,70 | 8.5 |
|  Rapid | A shorter wash for lightly soiled loads that do not need drying. | → Main wash(40°C) → Hot rinse | 15 g (Main washing) | 42 minutes | 0,50 | 6 |
|  Pre-Rinse | To rinse dishes that you plan to wash later that day. | → Pre-wash | – | 9 minutes | 0,01 | 5 |

Using the dishwasher



The washing program „ECO“ is „medium“ for the washing of the suitable soiled dishes and most efficient in terms of combined energy and water consumption.

The fair values of the washing program are a guideline only. Circumstances that are not dependent on the device, for example the temperature of the supplied water, the water pressure, etc., may affect the overall duration of the wash cycle.

* Default program, according to the test cycle.

4.1 Setting up the washing program



Make sure that notes from the first section have been complied with „before first use“.

1. Check the status of the rinse aid and refined salt.
2. Pull out the upper and lower basket and clear up the dishes - see instructions for loading the dishwasher.
3. Press the lower and upper basket back in place.
4. Fill in the washing detergent.
5. Turn the dishwasher off using the ON/OFF-button.

Wait before pushing the program selection button for 5 seconds, otherwise it could happen that the consumer is not working properly.



6. Press the program selector button and select the appropriate program in order for the installed harness. The program indicators show you which wash program you have selected.
7. Select the program you want to use.
8. Close the door firmly until you hear a click of the door lock.
9. After a few seconds you will hear how the machine fills with water and the wash cycle begins.

Using the dishwasher

4.2 Changing the washing program



Changing of the washing program should be carried out immediately after the start of the program, otherwise the tablets could be already solved or hot water may be leaking.

1. Slowly open door of the appliance.
2. Wait about a minute until fully opening the door, so you can be sure that the spray arms stop working.
3. Press the program selector button and hold it down for 3 seconds to cancel the wash program. Then press the program select button to select the wash program.
4. Select the program you want to use.
5. Close the door firmly until you hear a click of the door lock.
6. After a few seconds you will hear how the machine fills with water and the wash cycle begins.

4.3 At the end of the washing program

1. The audio signal will ring 6 times.
2. Turn the dishwasher off using the ON/OFF-button.
3. Before taking out the dishes we recommend that you wait at least **five minutes** in order to avoid taking out dishes that still may be hot or fragile. The dishes are also dry better if you leave it longer in the open dishwasher.
4. Open the door and take the dishes out.

4.4 Additional loading of dishes



The additional loading of the dishes in the dishwasher is only possible when the washing program has just been started, otherwise the detergent and the water may leak.

1. **Slowly** open the door of the dishwasher and wait until the spray arms stop working. (Risk of burns)
2. Now you can fully open the door and additionally load the dishes in the dishwasher.



4.5 Set up the delayed start



You can set the delayed start of the program with a deferment of **24 hours**. The delayed start can be set at hourly intervals.

1. Set the washing program described in 4.1.
2. Press the button to select the washing program and choose the one you want to use. The corresponding washing program lamp lets you know which wash program you have selected.
3. Press the button for the delayed start.
4. Press the button for the delayed start until the desired time (1, 2, 3, ... 23, 24 hours) is displayed on the LED-display.
5. When the time is reached, the wash cycle starts.

4.6 Refill signal lamps

- The pilot light  indicates that you should fill the rinse aid into the dishwasher.
- The pilot light  indicates that you should fill the salt in the dishwasher.

4.7 3-in-1-function

If you use the 3-in-1 tabs, press the 3-in-1 key and the machine adjusts the purging sequence of these tablets.

4.8 Key lock / Children lock

- You can lock the control panel to avoid unintended interference. All buttons are without function when activating the lock when activating the lock.
- Press the **3-in-1-button** and the **button for the delayed start at the same time** and hold it for 3 seconds to switch the key-lock on and off.

5. Energy savings when using the dishwasher

Load the dishes

- When loading the dishes into the dishwasher, please follow the instructions in the relevant chapter of this manual, in order to achieve the optimum results.
- Turn the dishwasher only when it is full; Way you achieve the optimal energy and water utilization.
- To select the most efficient wash cycle according to the size and type of fill, you go through the program table.
- The ECO program washes dishes at a lower temperature and uses less water during the cycle. This makes it more environmentally friendly and helps reducing expenditure on energy and water.

Application

- All filters must be cleaned regularly to ensure that the dishwasher is clean and works efficiently.
- After use, do not forget to switch off the dishwasher. If the unit remains in standby mode, each year large quantities of energy are wasted.
- Before loading the dishes into the dishwasher, the dishes must not be rinsed off. If you prefer the pre-rinse, use cold water for the dishes, but do not waste the water and do not let it flow uninterrupted.
- For dishes which aren't very dirty, use shorter programs with a lower temperature. Shorter programs need less energy and work equally well. Modern dishwashing detergents have the same effect at lower temperatures.

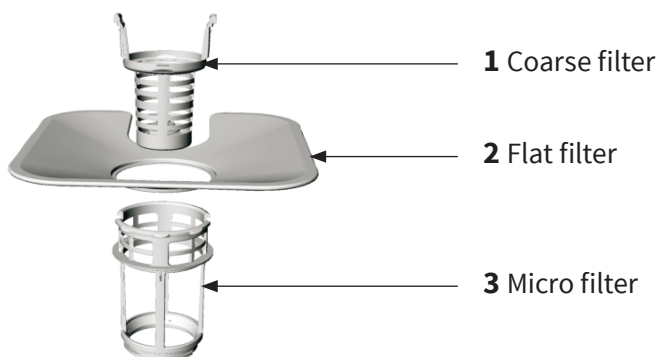
6. Maintenance and cleaning



Before cleaning, please turn off the power.

Filter system

Your device is equipped with a three-stage filtration system that is due to a good access to the bottom of the dishwasher.



Coarse filter: Big debris, such as bone and glass that could clog the drain will be trapped in the coarse filter. To remove an item caught in this filter, gently squeeze the taps on the top of this filter and lift it out.

Flat filter: Food and debris will be trapped by a special jet on the lower spray arm.

Micro filter: This filter holds soil and food residue in the sump area and prevents it from being redeposit on the dishes during a cycle.



Even if the filter system is effective, don't use your dishwasher for waste disposal. Remove all food groups from the dishes before putting them in the dishwasher.

Maintenance and cleaning

6.1 Filter cleaning

It is recommended to clean the entire filter unit always thoroughly and regularly.

1. Turn the coarse filter counterclockwise and pull it in the upward direction. Rinse this part under running water and remove all food residues that have attached themselves to the filter.
2. Pull the main filter out and rinse it off under running water to remove all food residues that have been attached to the filter.
3. Remove the fine filter back in.
4. Remove the main and coarse filter back into the space provided in the base of the dishwasher. The coarse filter must be turned in a clockwise direction, so that it locks in the correct position.



If dish breaks in the device, make sure that all fragments are removed before the machine is started again, so as not to damage the unit.



Never turn on the wash cycle when the filters are not installed!

6.2 Cleaning the spray arms

The spray arms should be cleaned regularly to avoid clogging of the nozzles in the spray arms and the bearing with hard water deposits.

- To remove the spray arm, first unscrew the nut and remove the washer, which is placed on the upper part of the spray arm.



Maintenance and cleaning

- Remove the spray arm gently upwards to remove the lower spray arm.
- Spray the spray arm with hot water and soap to clean the nozzles with a fine brush.
- Rinse the spray arm thoroughly and then reassemble at the designated place.

6.3 Cleaning tips



When cleaning the operation panel or operating parts, never use abrasive cleaners or polishes for furniture care.

- Please wipe the control panel please only with warm water and a damp, clean wiping cloth.

Cleaning the door

- Only use a soft, damp cloth for cleaning the door edge.
- Any cleaner in spray cans shouldn't be used.
- For indoor and outdoor areas do not use abrasive cleaners as they may damage them.

Other cleaning tips

- If you don't use the dishwasher for a longer time (for example when you're on vacation), it is recommended to run a wash cycle with no dishes inside, then you can disconnect the power plug and the water supply.
- When the wash program is done, leave the door slightly ajar, so that moisture and odors are not closed inside.

Troubleshooting

7. Error code system



If your device finds that it is not working properly, warning lights can flash. In the following error codes you may be able to eliminate the error itself, by considering the following instructions.



Before starting maintenance work, the device must first be disconnected from the power supply.

| Error code | Meaning | Possible causes |
|------------|------------------------|--|
| E1 | Door open | The door is opened when the dishwasher is operating. |
| E2 | Water inlet | Water inlet malfunction. |
| E3 | Water drainage | Water drainage malfunction. |
| E4 | Temperature sensor | Temperature sensor malfunction. |
| E5 | Overflow/leakage | Overflow occurs/Water leakage occurs/ Check the water pipe whether its straight |
| E6 | Water leakage | Water leakage occurs. |
| E7 | Heating element | Abnormal heating. |
| E8 | Water diversion system | Error in the water diversion system. |

E2: The water refill duration is longer than expected.

- Check the water pressure in the water distribution lines.
- Clean the filter in the water supply hose.
- Make sure that the water supply hose is not knotted or kinked.
- Make sure that the water tap connected to the device, is completely open.

Troubleshooting

E3: The expiration period is longer or extended.

- The drain pipe can be located too high or wrong. Read the installation instructions and make sure that the installation is properly done.
- Check that the drain hose is not knotted or kinked.
- Make sure that the drain hose is not longer than the length of the original hose.

E3: The unit found presence of water in the case of the dishwasher.

- Check that the drain hose is not knotted or kinked.
- Check if there are congested locations in the drain hose or if maybe the drain system is clogged to which the washer is connected.
- The drain pipe can be located too high or wrong. Read the installation instructions and make sure that it is properly installed.
- After you correct the error that led to the display of the error codes, connect the power back to the power supply.
- Switch the dishwasher on with the ON / OFF button and wait 5 seconds before you set your own program using the program selection buttons.



Once you were able to fix the error that led to the display of the error codes, connect the power back to the power supply. Switch it using the ON / OFF button again and wait 5 seconds.



If repair costs incurred during the warranty period due to improper operation of the unit, the customer must pay these costs themselves.

Troubleshooting

7.1 General diagnosis

| Problem | Possible causes | Help |
|-------------------------------------|--|---|
| The dishwasher doesn't work. | The fuse has blown or the safety switch of the circuit has been actuated. | Replace the fuse or set the safety switch of the circle. Shut off all other appliances that are connected to the same circuit as the dishwasher. |
| | The power supply is not turned on. | Make sure that the dishwasher is turned on and the door is closed properly. Make sure that the plug of the power cable is fully inserted into the socket. |
| | Low water pressure. | Check that the water supply is connected properly and that the water supply line is open. |
| The drain pump doesn't stop. | Overflow. | The system is designed with a security system so that any overflow is detected. When an overflow is detected, it continues to run the drain pump if the unit is powered. |
| Sound/Noise | Some noise is normal. | During the rinse cycle, a certain operating sound arises, especially when the food residues are removed from the inserted objects and when the detergent dispenser pushes the tablet inside arises. |
| | The kits are not stored in the baskets or a small object has fallen into the basket. | Ensure proper positioning of the objects according to the instructions for their contribution. |
| | The engine „purrs“. | If the dishwasher doesn't work for a longer period, make sure that the device is set to one of the washing programs. Otherwise, the gasket can dry out the motor and lead to a higher noise level of the machine. |

Troubleshooting

| Problem | Possible causes | Help |
|--|--|--|
| Foam in in the drain. | Rinse aid poured out. | Wipe excess or poured out rinse aid always immediately |
| Spots on the inner wall | Dishwashing detergent with dye | Use detergent without dye. |
| The dishes are not quite dry. | The rinse aid dispenser is empty. | Fill up on this. |
| The dishes and the pans are not clean. | Wrong program. | Select a more intensive wash program. |
| | Incorrect insert. | Make sure that the spray arms and the detergent dispenser are covered with no great dish pieces. |
| Spots and streaks on the lenses and the pans. | <ul style="list-style-type: none"> Extremely hard water Low input temperature Incorrect insert Wrong detergent Wrong salt / detergent | See related sections of this manual for the determination of whether the detergent, salt and detergent levels are fine. Verify whether the dishes are loaded properly. |
| Steam. | Normal appearance. | The drying and draining of water can result in the leakage of a small amount of steam in the vicinity of the door latch. |
| Black or gray spots on the plates. | The rubber on the aluminum cutlery touches the plate. | To eliminate these stains, use a medium-abrasive cleaners. In the future, always make sure that the harness is correctly inserted. |
| Water on the bottom, inside of the device. | Normal appearance. | A small amount of water on the floor of the unit is normal. |
| Leaks in the dishwasher machine. | The detergent dispenser is filled over or the detergent pours into the interior of the device. | Do not over fill the detergent dispenser. The poured detergent may cause excessive foaming and overflowing. Wipe all poured liquids immediately with a damp cloth. |
| | The dishwasher is not balanced. | Make sure that the dishwasher is horizontal and is balanced. |

9. Information sheet

| | |
|----------------------------------|------------------------------|
| Manufacturer | KKT KOLBE |
| Model number | GS63VI |
| Standard tableware sets | 12 |
| Energy efficiency class (1) | A+++ |
| Annual efficiency class(2) | 231 kWh |
| Energy demand for standard cycle | 0.8 kWh |
| Energy needed for off state | 0.35 W |
| Energy needed for standby mode | 0.90 W |
| Annual water demand (3) | 3080 Liter |
| Drying performance class (4) | A |
| Standard washing cycle (5) | ECO |
| Duration of standard cycle | 180 min |
| Sound | 47 dB |
| Installation type | Free standing |
| Water temperature | Max. 61 °C |
| Water pressure | 0.4-10bar=0.04-1.0MPa |

(1) On a scale of A + + + (highest efficiency) to D (lowest efficiency).

(2) Annual energy consumption for 280 standard washing cycles in the use of cold water and energy saving programs. The actual energy consumption is dependent on the application of the apparatus.

(3) Annual water demand at 280 standard washing cycles. The actual water demand will depend on how the device is used.

(4) On a scale of A (highest efficiency) to G (lowest efficiency).

(5) This program is suitable for washing normally soiled tableware and is the most efficient from the perspective of combined energy and water consumption.

Kundendienstinformationen

Bei technischen Fragen zu Ihrem Gerät
wenden Sie sich bitte an:

KKT KOLBE Kundendienst

Tel. 09502 9258810



Mail: info@kkt-kolbe.de

www: www.kkt-kolbe.de

→ Weitere Daten und Dokumente
finden Sie auf unserer Website unter
Support-Center.

.....



Thank you for reading.

We wish you lots of clean dishes.